



Explora
JOURNEYS

CONTENTS

**INTRODUCING
EXPLORA JOURNEYS**

Page 3

**EXPLORA I – EXPLORA II
HIGHLIGHTS**

Page 9

HOMES AT SEA

Page 13

INCLUSIONS

Page 24

**ONBOARD
EXPERIENCES**

Page 27

**OUR DESTINATION
EXPERIENCES**

Page 60

We strive for accuracy and excellence in all details, however, there might be technical alterations or typographical errors impacting the details in the document.

VERSION NOVEMBER 2023

INTRODUCING EXPLORA JOURNEYS

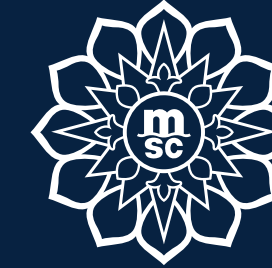
Explora Journeys is the new luxury lifestyle travel brand launched by the MSC Group with the ambition to redefine the luxury cruise category.

The concept: Vibrant, cosmopolitan, relaxed European luxury at sea. Instead of cruises, we create journeys – of the mind, and across the oceans of the world. Visits to places on and off the beaten track.

On board: Spaces that offer guests relaxed luxury, creating a home at sea. Restoring life's essential balance with a combination of discovery and appreciation for wellbeing and nature. This is what our new discerning travellers have asked for and this is what they will enjoy on Explora Journeys.

THE INSPIRATION
BEHIND OUR NAME

Our name – Explora Journeys – is *inspired*
by our **PASSION** for *exploration* and
discovery, alongside an inherent **RESPECT**
for the *seas* and *oceans* of the world.
It's why our **MODERN**, *elegant* brand logo
subtly reflects the *curves* and **MOVEMENT**
of the sea and waves.



THE EXPLORA JOURNEYS
MANDALA

An *integral* element of the logo and brand is the Explora Journeys **MANDALA** – *designed* by Alexa Aponte-Vago, CFO of the MSC Group, daughter of *founder* Gianluigi Aponte and wife of Chairman Pierfrancesco Vago.

With deep roots in spirituality, the mandala pattern represents a journey of personal discovery and fulfilment. Illustrations of the lotus flower symbolise purity of body, speech and mind, while a nod to the fleur-de-lis represents humility and a clear connection to our European heritage.



EXPLORA I

Explora

DISCOVER THE
OCEAN STATE OF MIND

The **OCEAN** and its *influence*
sits at the heart of the
Explora Journeys brand.
The ocean connects
you with **YOURSELF, PEOPLE**
and the *places* around you.

It relaxes you and creates an energy in you
that inspires inner and outer discovery, broadens
horizons and triggers new connections.

All of this creates an emotional connection
that is powerful, transformative, yet universal.
We call it the **OCEAN STATE OF MIND**.

The Ocean State of Mind is reached only
with Explora Journeys. It's why all that we
do is designed to offer refined yet effortless luxury,
with the opportunity for exploration and
transformation of the inner and outer self,
resulting in a state that is uniquely rewarding — physically,
intellectually and spiritually.



A BRAND WITH PERSONALITY

We have developed a *personality* and *tone* – inspired by *the Ocean State of Mind* – which reflects the brand's *desire* to deliver *vibrant, relaxed, European luxury* at sea. Here are just a few of the terms we use to bring this to *life*.

JOURNEYS

Rather than cruises, voyages, itineraries

—
GUESTS

Rather than passengers, customers, or consumers

—
SHIPS

Rather than boats, vessels, cruise ships

—
TRAVEL ADVISORS

Rather than travel agents

—
HOSTS

Rather than crew, crew members

—
**SUITES, PENTHOUSES & RESIDENCES,
HOMES AT SEA**

Rather than cabins, staterooms, rooms

—
TERRACES

Rather than balconies, verandas

—
**DESTINATION
EXPERIENCES**

Rather than tours, shore excursions



EXPLORA I - EXPLORA II HIGHLIGHTS

SIX LUXURY CRUISE SHIPS
BUILT BY FINCANTIERI IN ITALY



DELIVERY SCHEDULE

EXPLORA I

2023

EXPLORA II

2024

EXPLORA III

2026

EXPLORA IV

2027

EXPLORA V

2027

EXPLORA VI

2028

THE DETAIL BEHIND EXPLORA I & EXPLORA II

FEATURES

- Length: 248 m (~813 ft)
- Tonnage: 63,900 GT
- Guests per hosts ratio: 1.25 : 1

461 OCEAN FRONT SUITES

- 1 Owner's Residence
- 22 Ocean Residences
- 67 Ocean Penthouses
- 371 Ocean Terrace and Ocean Grand Terrace Suites
- 78 multi-generation-friendly connecting suites

FEATURING

- Private terraces which are amongst the largest in the category
- Large floor-to-ceiling windows with elegant interiors
- Spacious walk-in wardrobe with a seated vanity area

18 RESTAURANTS, BARS AND LOUNGES

- Focused on healthy, delicious food from local, sustainable sources
- Multiple culinary experiences across six vibrant restaurants and numerous lounges (as well as In-Suite Dining) created to celebrate global cooking talents, provenance and wholesome ingredients
- 12 indoor and outdoor bar and lounges with curated entertainment and intimate performances

NUMEROUS LOUNGING AND ENTERTAINMENT EXPERIENCES

- Cosmopolitan, effortless entertainment with the perfect blend of vibrancy and privacy across an array of indoor and outdoor spaces on board
- Casino, art gallery, culinary school and curated shopping experiences

GENEROUS OUTDOOR DECKS

- Three outdoor pools, including one adults-only, and one indoor pool with retractable glass roof
- 64 private cabanas
- Multiple indoor and outdoor whirlpools
- Poolside dining and lounging

HOLISTIC WELLNESS AND FITNESS

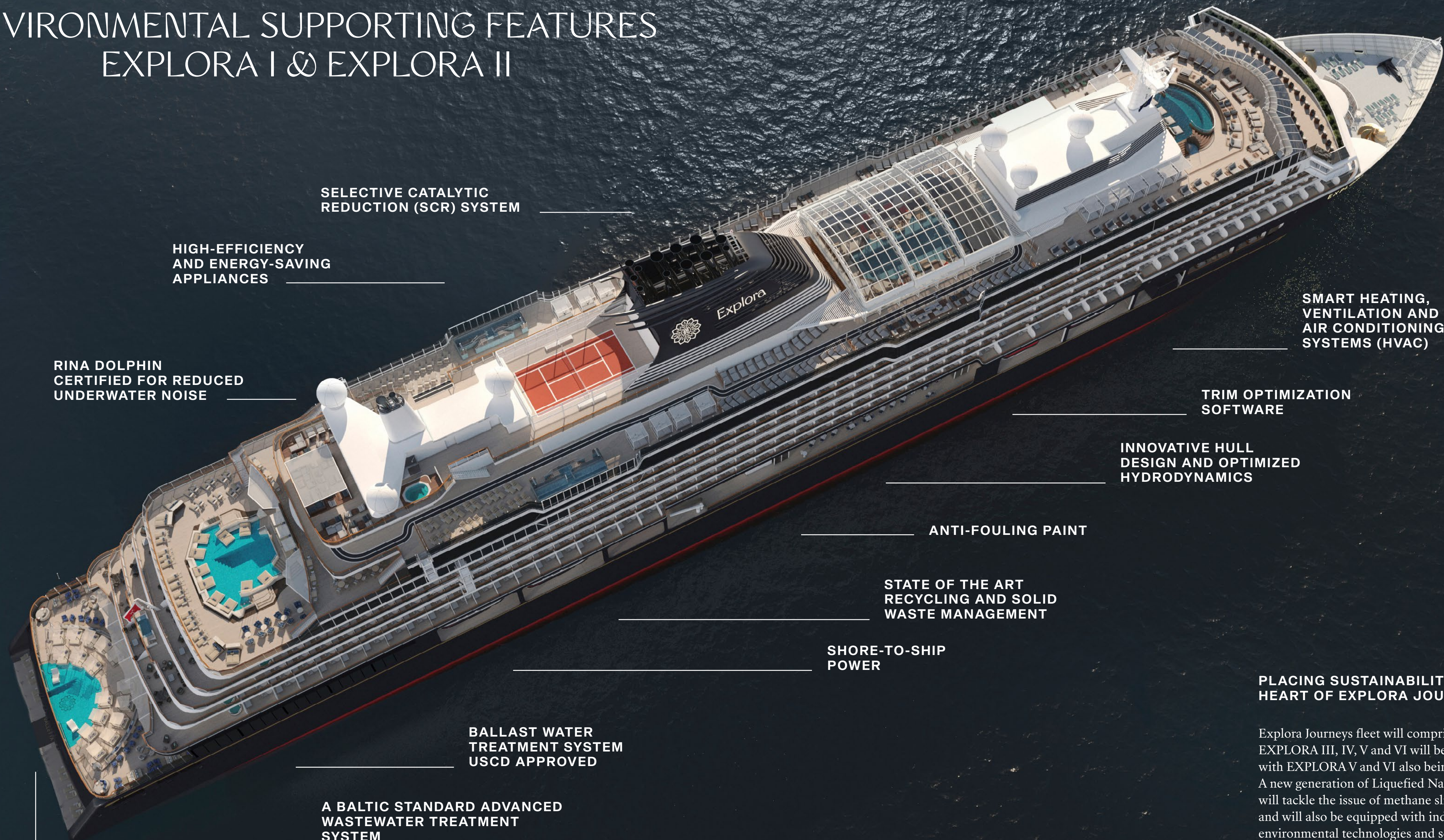
- Over 700 sqm (7,500 sq ft) of indoor and outdoor wellness facilities
- Over 270 sqm (2,900 sq ft) of fitness facilities with latest equipment

THE LATEST ENVIRONMENTAL-SUPPORTING TECHNOLOGIES

- Hybrid-ready energy solutions
- Waste-management and energy-saving solutions
- No single-plastic used onboard and ashore



ENVIRONMENTAL SUPPORTING FEATURES EXPLORA I & EXPLORA II



SELECTIVE CATALYTIC
REDUCTION (SCR) SYSTEM

HIGH-EFFICIENCY
AND ENERGY-SAVING
APPLIANCES

RINA DOLPHIN
CERTIFIED FOR REDUCED
UNDERWATER NOISE

SMART HEATING,
VENTILATION AND
AIR CONDITIONING
SYSTEMS (HVAC)

TRIM OPTIMIZATION
SOFTWARE

INNOVATIVE HULL
DESIGN AND OPTIMIZED
HYDRODYNAMICS

ANTI-FOULING PAINT

STATE OF THE ART
RECYCLING AND SOLID
WASTE MANAGEMENT

SHORE-TO-SHIP
POWER

BALLAST WATER
TREATMENT SYSTEM
USCD APPROVED

A BALTIC STANDARD ADVANCED
WASTEWATER TREATMENT
SYSTEM

LED LIGHTING,
HIGH-EFFICIENCY
APPLIANCES

PLACING SUSTAINABILITY AT THE HEART OF EXPLORA JOURNEYS

Explora Journeys fleet will comprise six ships: EXPLORA III, IV, V and VI will be LNG-powered, with EXPLORA V and VI also being hydrogen-powered. A new generation of Liquefied Natural Gas (LNG) engines will tackle the issue of methane slip and will also be equipped with industry first environmental technologies and solutions.



HOMES AT SEA

*Elegant, spacious and comfortable suites,
penthouses and residences designed to create
a home at sea for our guests*



Welcome Home
Ms. & Mr. Jones

HOMES AT SEA

Each of our **461** *ocean-front suites*, penthouses and residences – all **DESIGNED** with a *refined, European elegance* – are created to bring guests **CLOSER** to the *ocean* itself, with floor-to-ceiling windows and **PRIVATE** *sun* terraces.

With unrivalled space and privacy – and service that means everything is taken care of – our guests can relax into their comfortable homes at sea with their luggage delivered and a chilled bottle of champagne waiting as they undertake their ocean journey.

Our suites start at 35 sqm (377 sq ft) with an average size of 42 sqm (453 sq ft), making them among the most spacious for the category.



**FEATURES
AND SERVICES**

IN-SUITE TECHNOLOGY

- Complimentary Wi-Fi
-
- Infotainment system with Smart TV
-
- Telephones with voicemail
-
- On-demand TV options
-
- Individual climate control in each suite

BUTLER SERVICES*

- Pressing and laundering assistance
-
- Private in-suite dining
-
- Itinerary and transport planning
-
- Celebrations planning

SERVICES

- 24-hour butler services by the Residence Hosts*
 -
 - 24-hour concierge services
 -
 - 24-hour in-suite dining
 -
 - 24-hour laundry, wet-cleaning and ironing services**
- Twice-daily housekeeping services, including evening turndown service
 -
 - Shoeshine service

**Available for Ocean Residences **Additional charges may apply*





OCEAN GRAND TERRACE SUITES

301 OCEAN TERRACE SUITES & 70 OCEAN GRAND TERRACE SUITES

Our Ocean Terrace Suites **ELEGANTLY** combine space – at 35 sqm (377 sq ft) they are amongst the largest in the category – and **LIGHT**. Floor-to-ceiling windows bathe the suites in light and **PRIVATE** *sun terraces* bring guests closer to the **OCEAN** that carries them on their *journey*.

Our Ocean Grand Terrace Suites include a more **SPACIOUS** ocean-front terrace of 11 sqm (118 sq ft), allowing guests to savour the ocean from the comfort of their daybed.

FEATURES

- Oversized floor-to-ceiling windows with views of the sea
- Lounge area with coffee/dining table
- In-suite welcome bottle of Veuve Clicquot Yellow Label
- Private refrigerated mini-bar, replenished according to the guests' preferences
- Espresso machine, kettle and tea pot with a complimentary selection of coffee and teas
- Complimentary personal refillable water bottle for each guest
- Pair of binoculars for guests' use during their journey
- Safe accommodating most tablets and laptops

OUTDOOR

- Spacious ocean-front terrace with a dining area
- Comfortable daybed for relaxation

BEDROOM

- Bespoke king-sized bed sleep system – size: 180 x 200 cm (71 x 79 in)
- Some suites with twin beds – size: 2 x 90 x 200 cm (35 x 79 in)
- Down duvets and pillows
- Fine bed linens from Frette
- Extensive pillow selection
- Spacious walk-in wardrobe with a seated vanity area

BATHROOM

- Spacious bathroom with a walk-in shower and heated floors
- Plush bathrobes and bath linens from Frette
- Custom bath toiletries and amenities
- Dyson Supersonic™ hair-dryer and illuminated make-up/shaving mirror
- Some suites with bathtubs and accessible facilities

TOTAL SUITE AREA: 35-39 sqm (377-420sq ft)

SUITE: 28 sqm (301 sq ft) **TERRACE:** 7-11 sqm (75-118 sq ft)

MAXIMUM CAPACITY: 2 adults and 1 child under 18 years old (*baby cot or rollaway bed*)

67 OCEAN PENTHOUSES

The *Ocean Penthouses* offer a **LUXURIOUS, SPACIOUS** *retreat* with ocean-front floor-to-ceiling windows and expansive terraces to *unwind* and **RELAX**.

Each *penthouse* offers a **CHARACTERFUL** private dining area for four and a large sitting area, inviting guests to *entertain* in their suite, as well as a **CALM, comfortable** place to work.

FEATURES

- Oversized floor-to-ceiling windows with views of the sea
- Spacious lounge area
- Some suites feature separate living, dining and sleeping areas
- Dining table for 4 guests
- Some suites feature a spacious work desk area
- In-suite welcome bottle of Moët & Chandon Grand Vintage 2015
- Private refrigerated mini-bar, replenished according to the guests' preferences
- Espresso machine, kettle and tea pot with a complimentary selection of coffee and teas
- Complimentary personal refillable water bottle for each guest
- Pair of binoculars for guests' use during their journey
- Technogym Case Kit with a smart range of fitness gear
- Safe accommodating most tablets and laptops

BEDROOM

- Bespoke king-sized bed sleep system size: 180 x 200 cm (71 x 79 in)
- Some suites feature a double sofa bed
- Down duvets and pillows
- Fine bed linens from Frette
- Extensive pillow selection
- Spacious walk-in wardrobe with a seated vanity area

BATHROOM

- Spacious bathroom with a walk-in shower and heated floors
 - Plush bathrobes and bath linens from Frette
 - Custom bath toiletries and amenities
 - Dyson Supersonic™ hair-dryer and illuminated make-up/shaving mirror
- Some suites with bathtubs and accessible facilities

OUTDOOR

- Spacious ocean-front terrace with a dining area
- Comfortable daybed or lounge chairs for relaxation

TOTAL SUITE AREA: 43-68 sqm (463-732 sq ft)

SUITE: 34-47 sqm (366-506 sq ft) **TERRACE:** 9-21 sqm (97-226 sq ft)

MAXIMUM CAPACITY: 3 adults or 2 adults and 1 child under 18 years old (*baby cot, double sofa bed or rollaway bed*), some suites with a capacity for 2 adults and 2 children under 18 years old (*baby cot or double sofa bed*)





SERENITY RESIDENCE

22 OCEAN RESIDENCES

For a true **SENSE** of being at home at sea, **EXPERIENCE** the sweeping decks and effortlessly elegant spaces of our *Ocean Residences*.

Drink in perfect ocean **VIEWS** from the **PRIVATE** outdoor whirlpool on the **EXPANSIVE PANORAMIC** terrace and make the most of our Residence Hosts *providing butler* services.

FEATURES

- Private butler services by our Residence Hosts
- Oversized floor-to-ceiling windows with views of the sea
- Separate living, dining and sleeping areas
- Spacious lounge area
- Dining table for 4 or 6 guests
- In-suite welcome bottle of Dom Pérignon Vintage 2013
- Spacious work desk area
- Private refrigerated mini-bar, replenished according to the guests' preferences
- Espresso machine, kettle and tea pot with a complimentary selection of coffee and teas
- Complimentary personal refillable water bottle for each guest
- Pair of binoculars for guests' use during their journey
- Technogym Bench (Serenity and Cocoon Residences) and Technogym Case Kit for an efficient in-suite fitness experience
- Laptop-size safe

BEDROOM

- Bespoke king-sized bed sleep system size: 180 x 200 cm (71 x 79 in) or 200 x 200 cm (79 x 79 in)
- Featuring a double sofa bed
- Down duvets and pillows
- Fine bed linens from Frette
- Extensive pillow selection
- Oversized walk-in wardrobe with a seated vanity area

BATHROOM

- Luxurious marble bathroom with a bathtub or a separate walk-in shower (some suites feature both) and heated floors
 - Plush bathrobes and bath linens from Frette
 - Custom bath toiletries and amenities
 - Dyson Supersonic™ hair-dryer and illuminated make-up/shaving mirror
- Some suites include bathtubs

OUTDOOR

- Spacious ocean-front terrace with private outdoor whirlpool, a dining table and sun loungers or a daybed

TOTAL SUITE AREA: 70-149 sqm (753-1,604 sq ft)

SUITE: 56-74 sqm (603-797 sq ft) **TERRACE:** 14-75 sqm (151-807 sq ft)

MAXIMUM CAPACITY: 3 adults or 2 adults and 2 children under 18 years old (*baby cot or double sofa bed*)

1 OWNER'S RESIDENCE

The iconic Owner's Residence creates the largest living space on-board, with multiple harmonious spaces in which to relax, entertain and unwind.

Stand in awe of the panoramic **OCEAN VIEWS** from your **PRIVATE** outdoor terrace – extending over the full ship's width – with a spacious infinity whirlpool and enjoy intuitive, **INTELLIGENT**, dedicated private butler services by the Residence Manager.

FEATURES

- Dedicated private butler services by the Residence Manager
- Oversized floor-to-ceiling windows with views of the sea
- Separate living, dining and sleeping areas
- In-suite welcome bottle of Dom Pérignon Vintage 2013
- Abundant lounge area
- Dining table for 8 guests
- Spacious work desk area
- Private bar, replenished according to the guests' preferences
- Espresso machine, kettle and tea pot with a complimentary selection of coffee and teas
- Complimentary personal refillable water bottle for each guest
- Pair of binoculars for guests' use during their journey
- Technogym Bench and Technogym Case Kit for an efficient in-suite fitness experience
- Laptop-size safe
- Guest lavatory and powder room
- Butler pantry area

BEDROOM

- Bespoke king-sized bed sleep system – size: 200 x 200 cm (79 x 79 in)
- Down duvets and pillows
- Fine bed linens from Frette
- Extensive pillow selection
- Oversized dressing room

BATHROOM

- Luxurious marble double vanity bathroom
- Large bathtub and a walk-in shower
- Private steam room
- Plush bathrobes and bath linens from Frette
- Custom bath toiletries and amenities
- Dyson Supersonic™ hair-dryer and illuminated make-up/shaving mirror

OUTDOOR

- Panoramic ocean-front terrace covering the full ship's width, with a private spacious outdoor whirlpool, day beds, a dining table, a scenic lounge area, shower

TOTAL SUITE AREA: 280 sqm (3,014 sq ft)

SUITE: 155 sqm (1,668 sq ft) **TERRACE:** 125 sqm (1,345 sq ft)

MAXIMUM CAPACITY: 2 adults and 1 child under 2 years old (*in a baby cot*)

A connecting Ocean Terrace Suite can be reserved additionally, allowing for a total maximum capacity of 4 adults or 3 adults and 1 child under 18 years old.





GUEST SUITES OVERVIEW

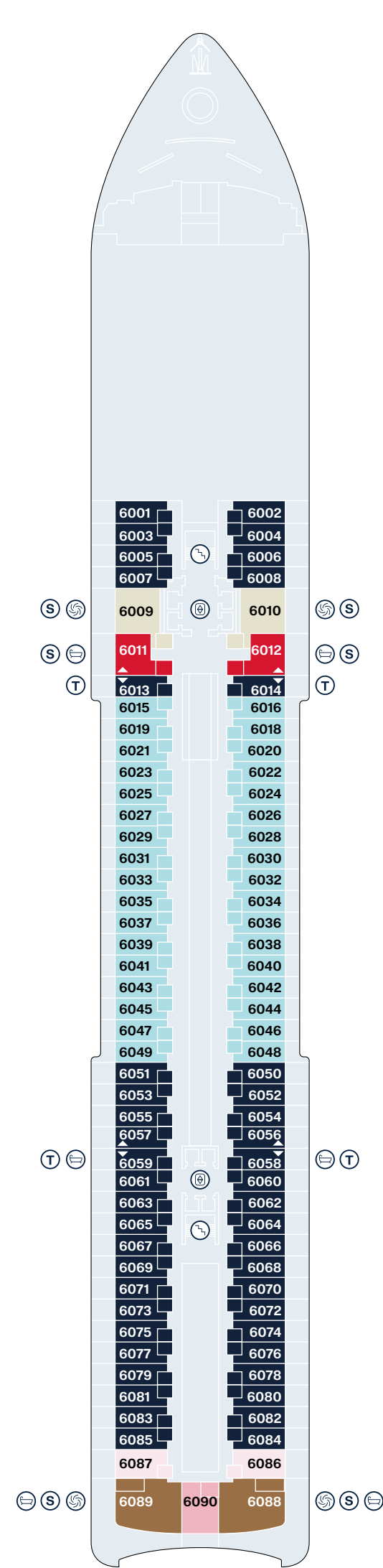
EXPLORA I

EXPLORA II

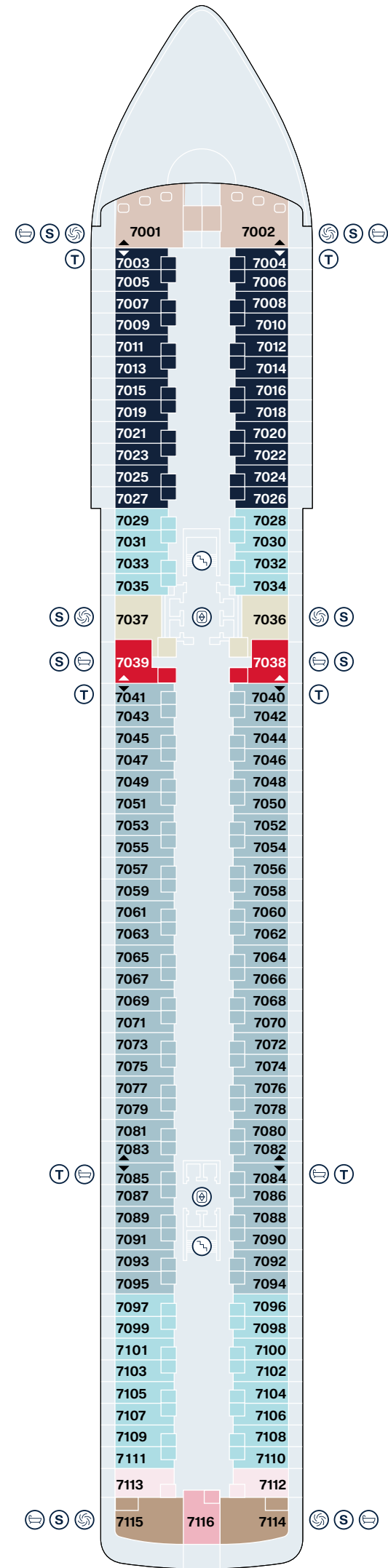
		DECKS	TOTAL SUITE AREA SQM (~SQ FT)	SUITE AREA SQM (~SQ FT)	TERRACE AREA SQM (~SQ FT)	QTY	
371 OCEAN SUITES	Ocean Terrace Suite OT1/OT4	OT1 - 6/7, OT2 - 7/8, OT3 - 8/9, OT4 - 9/10	35 (377)	28 (301)	7 (75)	301	
	Ocean Grand Terrace Suite GT	6-7	39 (420)	28 (301)	11 (118)	70	
67 OCEAN PENTHOUSES	Penthouse PH	7-8-9	43 (463)	34 (366)	9 (97)	7	
		6	48 (517)	34 (366)	14 (151)		
	Deluxe Penthouse DP	9-10	48 (517)	38 (409)	10 (108)	10	
		6	53 (570)	43 (463)	10 (108)		
		7	61 (657)	43 (463)	18 (194)		
	Premier Penthouse PP	8-9-10	52 (560)	42 (452)	10 (108)	40	
	Grand Penthouse GP	7-8-9-10	60 (646)	47 (506)	13 (140)	10	
		6	68 (732)	47 (506)	21 (226)		
	22 OCEAN RESIDENCES	Cove Residence CO	7-8-9-10	70 (753)	56 (603)	14 (151)	10
			6	80 (861)	56 (603)	24 (258)	
Retreat Residence RR		8-9	77 (829)	63 (678)	14 (151)	6	
		7	81 (872)	63 (678)	18 (194)		
Serenity Residence SR		7	113 (1,216)	60 (646)	53 (570)	4	
		9	126 (1,356)	60 (646)	66 (710)		
Cocoon Residence CR		6	149 (1,604)	74 (797)	75 (807)	2	
1 OWNER'S RESIDENCE		Owner's Residence OR	8	280 (3,014)	155 (1,668)	125 (1,345)	1
					TOTAL	461	

SUITE DECK PLANS

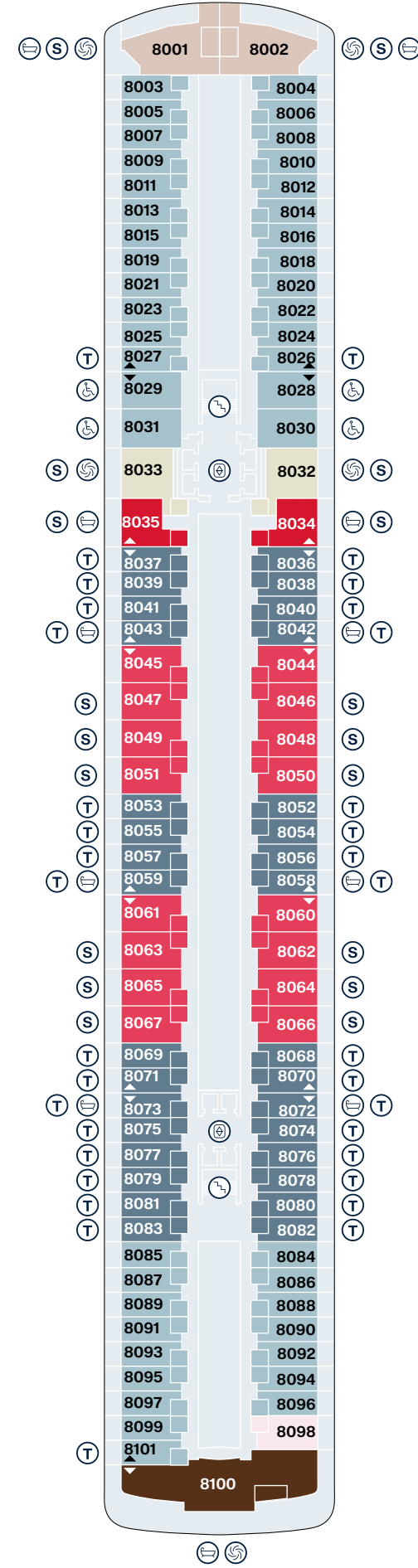
EXPLORA I | EXPLORA II



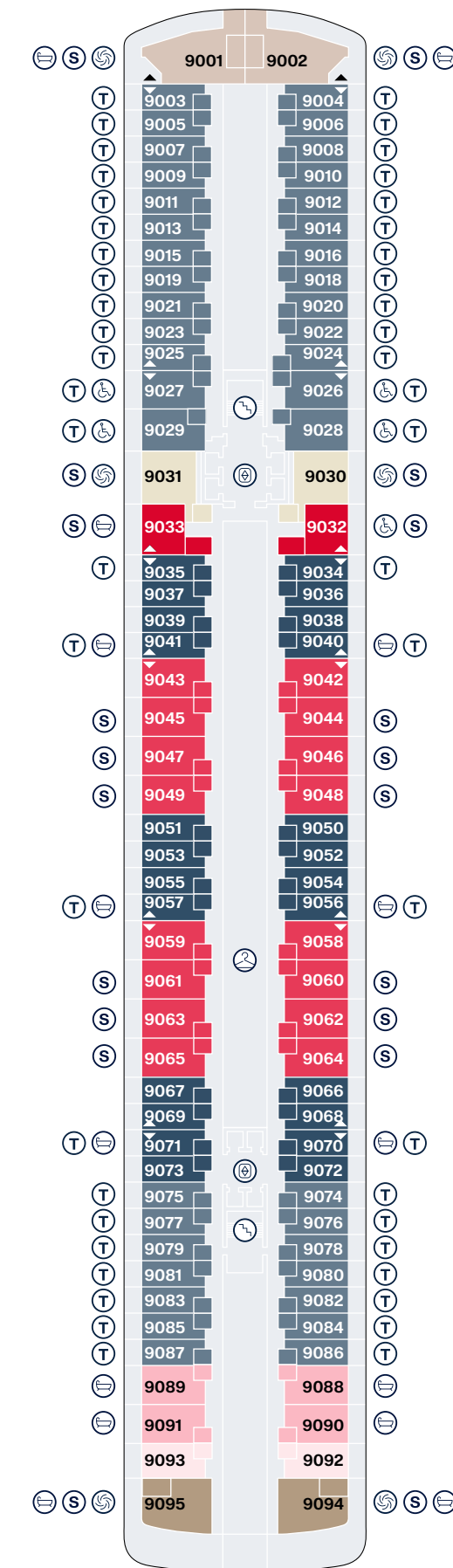
DECK 6



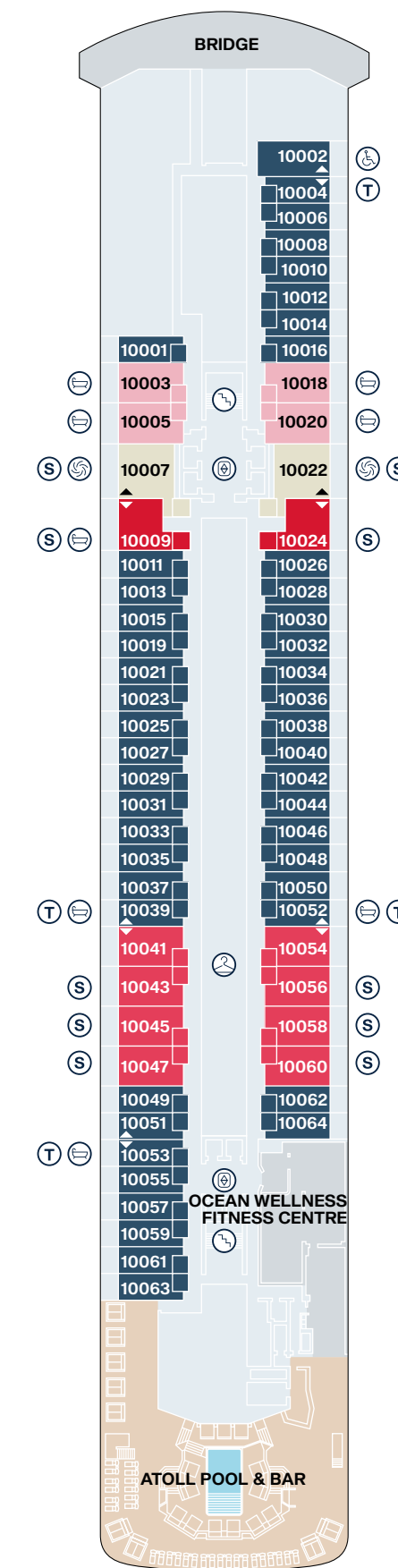
DECK 7



DECK 8



DECK 9



DECK 10

- OR** OWNER'S RESIDENCE
- CR** COCOON RESIDENCE
- SR** SERENITY RESIDENCE
- RR** RETREAT RESIDENCE
- CO** COVE RESIDENCE
- GP** GRAND PENTHOUSE
- PP** PREMIER PENTHOUSE
- DP** DELUXE PENTHOUSE
- PH** PENTHOUSE
- GT** OCEAN GRAND TERRACE SUITE
- OT4** OCEAN TERRACE SUITE
- OT3** OCEAN TERRACE SUITE
- OT2** OCEAN TERRACE SUITE
- OT1** OCEAN TERRACE SUITE
- PRIVATE WHIRLPOOL
- TWIN BEDS
- DOUBLE SOFA BED
- GUEST LAUNDRY
- ACCESSIBLE SUITES
- BATH
- LIFT
- STAIRCASE
- CONNECTING SUITES



INCLUSIONS

*Our perfect hosts welcome our guests to a refined
and generous all-inclusive journey*



THE PERFECT HOSTS

Everything we do is for the **BENEFIT** of our **GUESTS**. It's why we have **INDUSTRY-LEADING** *guest to HOSTS* ratio of **1.25 TO 1**.

This allows for an **INTUITIVE**, *knowledgeable* and *culturally intelligent service* **STYLE** that makes for *the perfect hosts* onboard, and **ENSURES** our guests can truly **RELAX** and *let go*.

ALL JOURNEYS INCLUDE

In-suite welcome bottle of champagne upon arrival

—
A bottle of wine and a bottle of spirit of the guests' choice upon arrival

—
Authentic, cultured and intuitive service from our team of hospitality experts

—
Nine distinct culinary experiences, including in-suite dining

—
Unlimited beverages, fine wines and premium spirits, speciality coffees, teas and soft drinks available anytime, including in-suite mini-bar*

—
Access to the spa thermal area

—
Wellbeing and fitness programmes on board and at the destinations

—
All on-board gratuities

—
Complimentary Wi-Fi throughout the ship

—
Shuttle services from port to city centre (where required/available)

Additional inclusions and services apply to our Ocean Penthouse and Ocean Residence categories.

** For fine wine and spirits connoisseurs or those wishing to elevate their experience or celebrate a special occasion, an ultra-exquisite selection of wines, spirits, and liqueurs will also be available (not part of the inclusive list of beverages).*

Please note that the complimentary wine and spirits selection is not available at Anthology restaurant.

NINE INCLUSIVE CULINARY EXPERIENCES,
INCLUDING IN-SUITE DINING

EMPORIUM MARKETPLACE

SAKURA

MARBLE & CO. GRILL

MED YACHT CLUB

FIL ROUGE

CREMA CAFÉ

GELATERIA & CRÊPERIE
AT THE CONSERVATORY

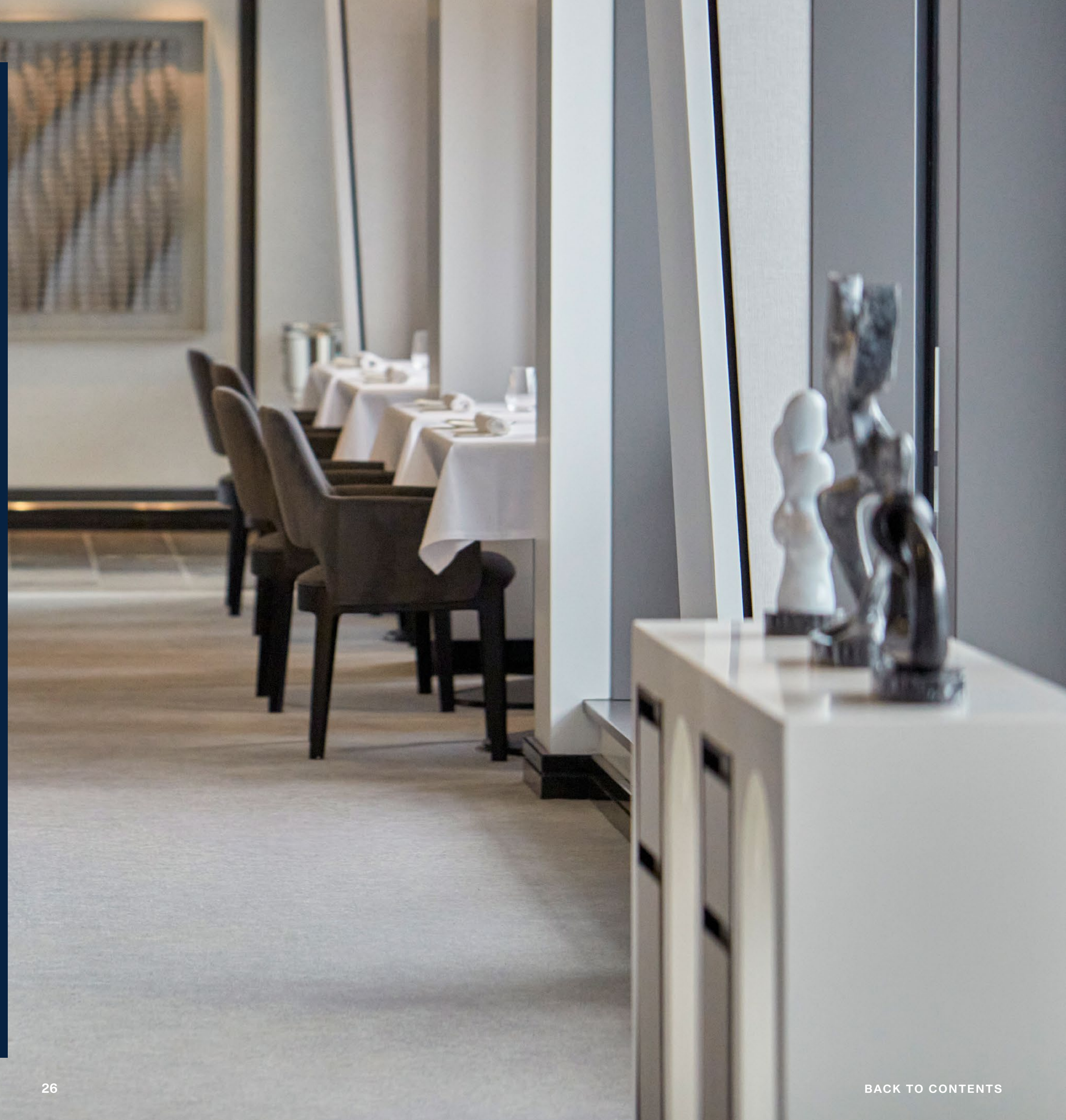
EXPLORA LOUNGE

IN-SUITE DINING

For those who are seeking to indulge in a truly one-of-a-kind experience enabling discovery and enrichment, Anthology offers menus curated by the world's most celebrated chefs and wine pairing by highly coveted winemakers that are not part of the inclusive culinary experiences.

Tasting menu – EUR 190 per person. Wine pairing – EUR 75 per person.

The Chef's Kitchen offers an immersive experience for up to 12 guests and is not part of the inclusive culinary experiences. Our culinary experts guide our guests through a journey of discovering new ingredients, flavours, textures and cultures.





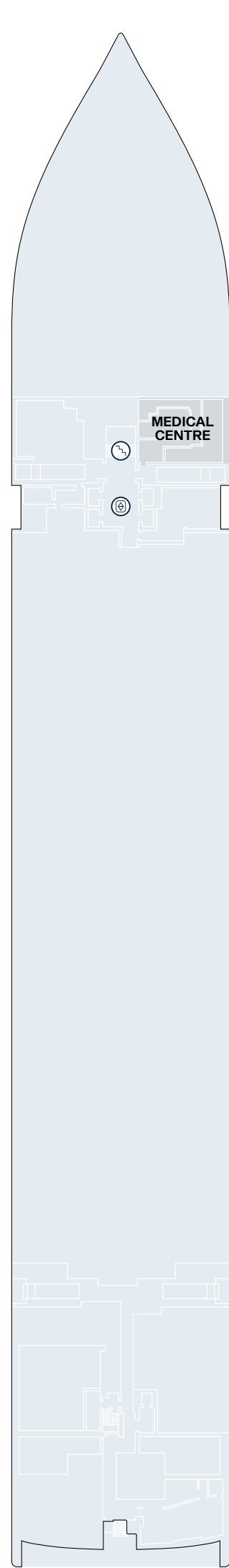
ONBOARD EXPERIENCES

*How Explora Journeys creates
enriching experiences onboard
for the mind, body and soul*

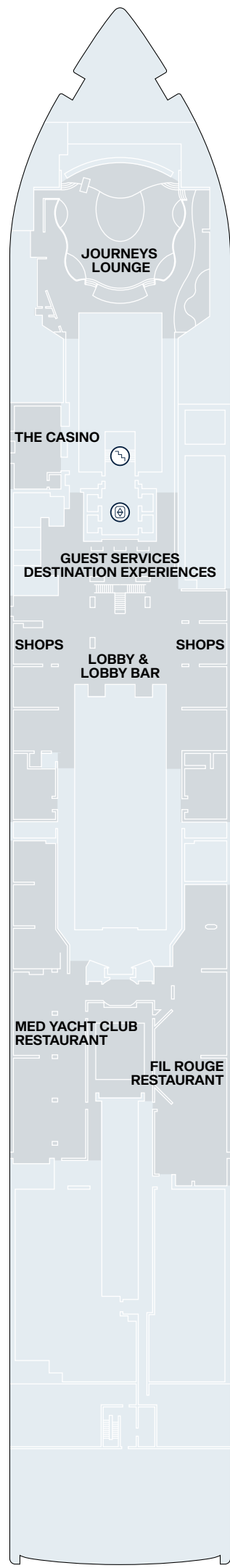
PUBLIC AREA DECK PLANS

EXPLORA I

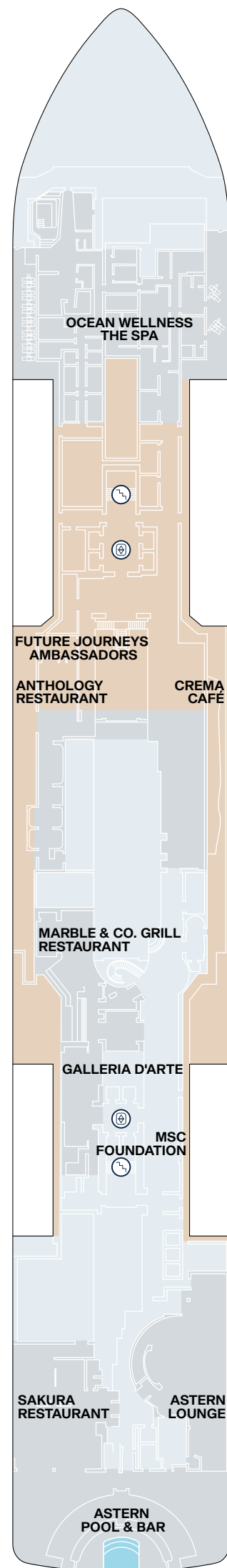
EXPLORA II



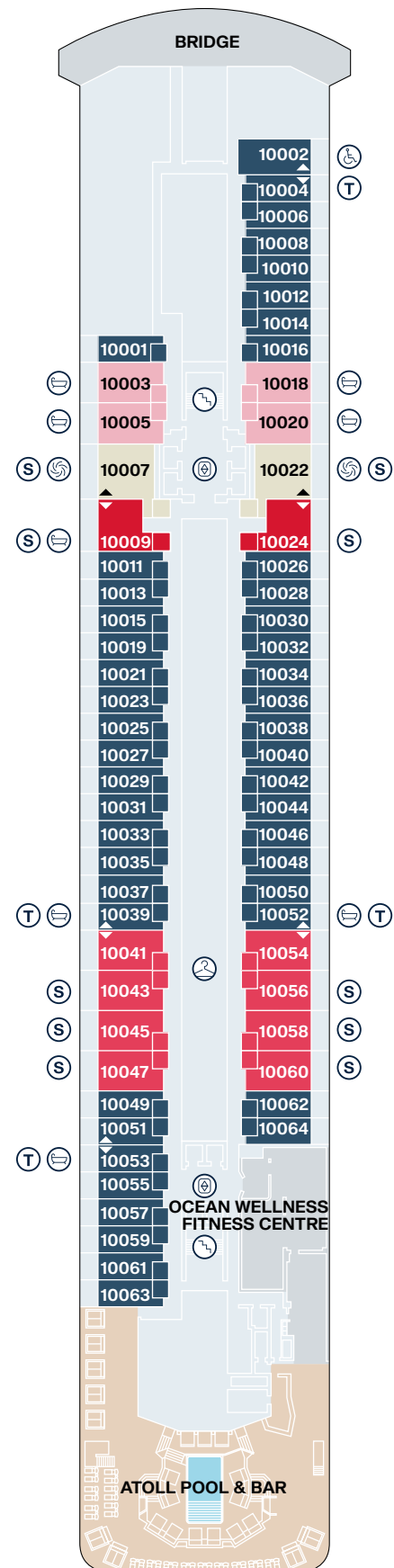
DECK 3



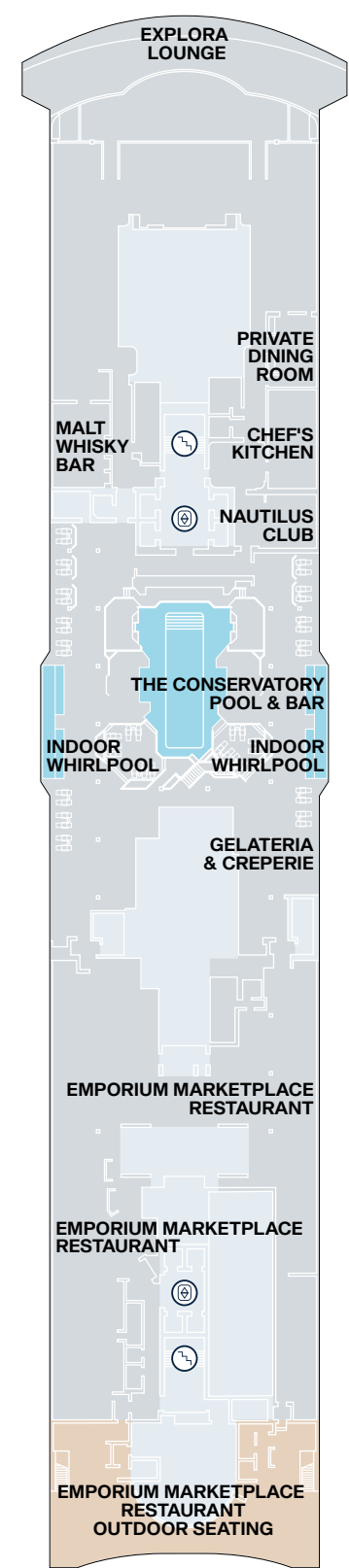
DECK 4



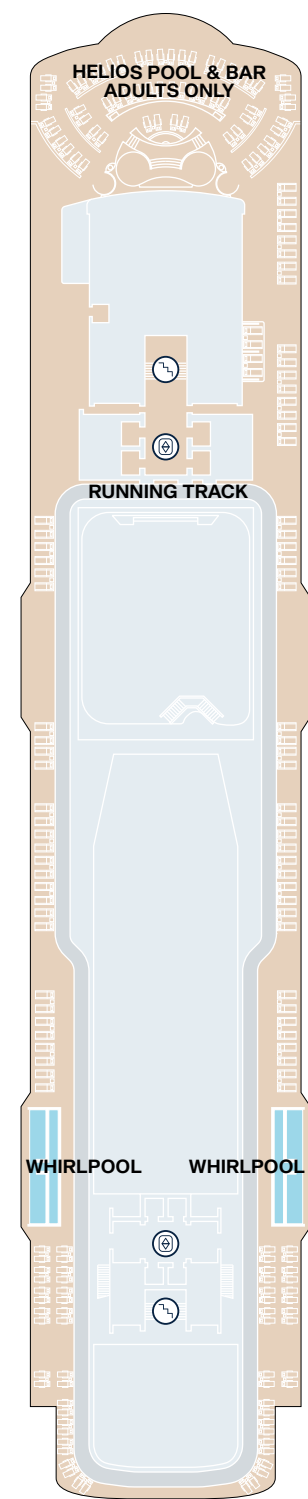
DECK 5



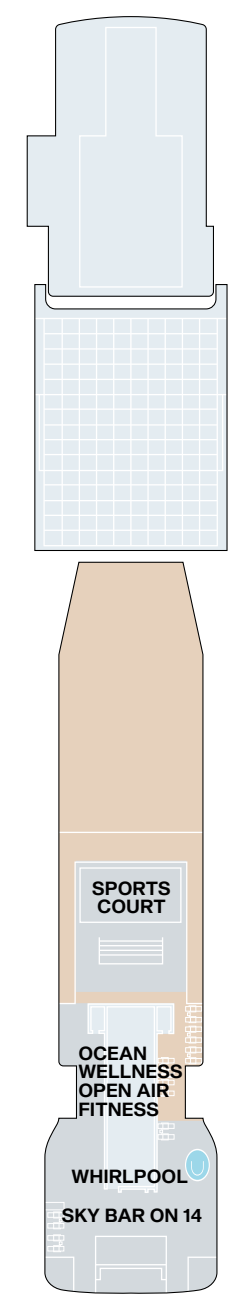
DECK 10



DECK 11



DECK 12



DECK 14

- OR OWNER'S RESIDENCE
- CR COCOON RESIDENCE
- SR SERENITY RESIDENCE
- RR RETREAT RESIDENCE
- CO COVE RESIDENCE
- GP GRAND PENTHOUSE
- PP PREMIER PENTHOUSE
- DP DELUXE PENTHOUSE
- PH PENTHOUSE
- GT OCEAN GRAND TERRACE SUITE
- OT4 OCEAN TERRACE SUITE
- OT3 OCEAN TERRACE SUITE
- OT2 OCEAN TERRACE SUITE
- OT1 OCEAN TERRACE SUITE
- ⊙ PRIVATE WHIRLPOOL
- T TWIN BEDS
- S DOUBLE SOFA BED
- ⊙ GUEST LAUNDRY
- ♿ ACCESSIBLE SUITES
- ♿ BATH
- ⬆ LIFT
- ⬆ STAIRCASE
- ⬆ CONNECTING SUITES

DINING

The culinary riches aboard Explora Journeys take their influences from across the globe, bringing personality, sophistication and a dash of soul to dining at sea –whether in one of the elegant restaurants, by a pool or on a private terrace.





CUISINE COVERING
ALL CORNERS OF THE GLOBE

*A VARIETY of culinary
EXPERIENCES as well as in-suite
dining to DISCOVER.*

CULINARY EXPERIENCES

ANTHOLOGY

Exquisite cuisine celebrating the talents and specialities of guest chefs from around the globe

—

SAKURA

Immersive Pan-Asian dining

—

MARBLE & CO. GRILL

A redefined European steakhouse experience

—

EMPORIUM MARKETPLACE

Effortless all-day dining restaurant

—

MED YACHT CLUB

Celebrating the flavours of the Mediterranean

—

FIL ROUGE

French-inspired international cuisine

—

EXPLORA LOUNGE

A luminous lounge offering spectacular 270-degree views, a spectacular backdrop to informal drinking and dining

—

CREMA CAFÉ

Bustling European all-day café with infinite sea views

—

GELATERIA & CRÊPERIE AT THE CONSERVATORY

Authentic French and Italian indulgences

—

CHEF'S KITCHEN

An immersive experience offering culinary classes

—

IN-SUITE DINING

Refined dining in the comfort of your suite or private terrace

ANTHOLOGY

Exquisite cuisine introducing the talents and masterpiece specialities of the world's most celebrated guest chefs.

Anthology is defined as *a collection of selected works of art* or music reflecting the restaurant that acts as a culinary stage for guest chefs to curate menus showcasing global cuisines, along with unique wine pairings.

Set in contemporary, refined elegance, with the opportunity to dine al fresco, lower light levels, and flawless service create an intimate yet elevated atmosphere.

Curated menus are paired with exclusive wines and fine non-alcoholic beverages single-picked by experienced sommeliers.

**OPEN FOR DINNER
RESERVATIONS RECOMMENDED**

*Dining at Anthology is truly a one-of-a-kind experience enabling discovery and enrichment, and is not part of the inclusive culinary experiences.
Tasting menu – EUR 190 per person. Wine pairing – EUR 75 per person*

**A UNIQUE CULINARY
STAGE SHOWCASING
GLOBAL COOKING
TALENTS, CUISINES,
PROVENANCE AND
RARE INGREDIENTS**





The story of Anthology continues with
CHEF EMMA BENGTSSON.

ANTHOLOGY BY EMMA BENGTSSON

Acclaimed for her creative interpretations of classic dishes and an innovative culinary approach dishes inspired by traditional Nordic-style cooking and the vibrant spirit of New York City, Chef Emma Bengtsson is the first female and US-based chef to showcase her culinary talents at Anthology, one of the six restaurants on board EXPLORA I.

A trailblazer for women in fine dining, Emma Bengtsson is the first female Swedish chef and the second female chef in the US to be awarded two Michelin stars. Her distinctive style of simplicity and sustainability seamlessly aligns with Explora Journeys' ethos of sustainable, locally sourced dining experiences that create a culinary 'Ocean State of Mind'.



Each dish is a symphony of flavours, textures, and aromas, transporting guests to a world where culinary creativity and panache meet.



Guests will enjoy the culinary creations of Anthology by Emma Bengtsson from autumn 2023 till spring 2024.

SAKURA



An immersive, authentic dining experience offering the finest Pan-Asian cuisine.

Named after the cherry blossom – the national flower of Japan – and symbolic of renewal and optimism, Sakura offers Japanese, Thai, Vietnamese, and Malaysian flavours for a taste of Pan-Asian cuisine that is both authentic and energising.

Expansive ocean views, Asian-influenced beverages, a Sake sommelier, combined with seamless service and modern Asian music create a dynamic dining experience.

OPEN FOR LUNCH
AND DINNER

RESERVATIONS RECOMMENDED. SUSHI BAR IS
OPEN SEATING ON A FIRST COME FIRST SERVED BASIS

MARBLE & CO. GRILL

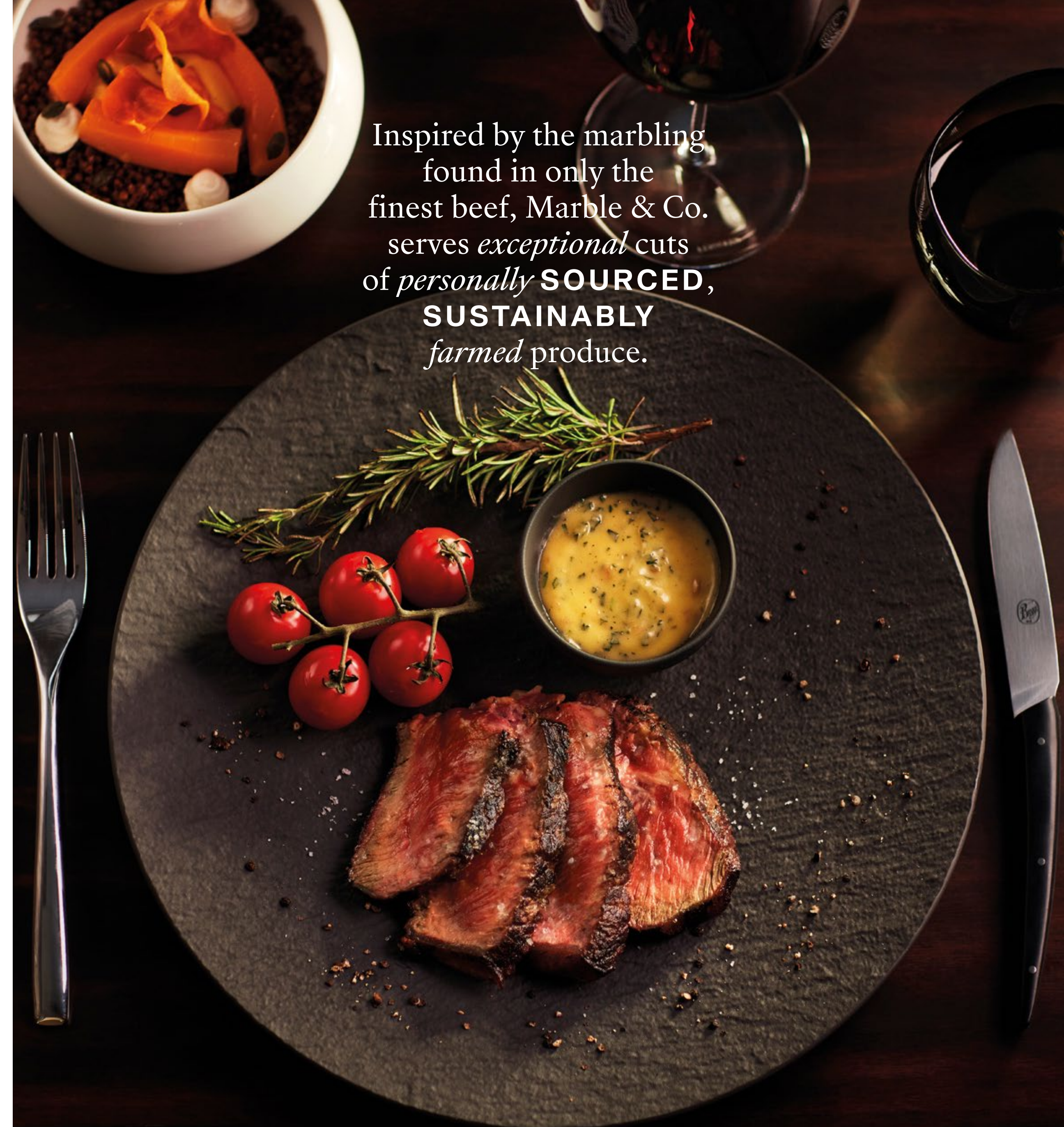
A redefined European steakhouse experience.

Taking subtle cues from the classic steakhouse, this European redefined experience is reflected through modern, understated yet sophisticated design with soft lighting, and relaxed yet attentive service and soft lighting.

The experience is augmented by an in-house dry ager and a cellar boasting a superb selection of fine wines.



OPEN FOR DINNER
RESERVATIONS RECOMMENDED



MED YACHT CLUB

A relaxed celebration of the flavours, ambience and la dolce vita of the Mediterranean.

Inspired by sailings across crystal clear waters, the Med Yacht Club is influenced by sophisticated, beachside Mediterranean restaurants, embracing the varied cuisines of the region - infusing tastes and textures of Italy, Spain, Greece, France, and North Africa – while incorporating plant-based, vegetarian and wholesome ingredients.

The restaurant's design is effortlessly refined, with relaxed, convivial atmosphere, bright lighting, large portholes, and Med-influenced music.

Wines will showcase the rich vineyards of the Mediterranean, with fresh juices and cocktails honouring regional ingredients.

OPEN FOR LUNCH (ON SEA DAYS)
AND DINNER

EMPORIUM MARKETPLACE

Effortless all-day dining, inspired by cuisines and flavours from across the globe.

Emporium Marketplace is an effortless all-day dining restaurant, bringing the global culinary talent and produce to the fore to offer diverse cuisines with a focus on quality produce, inspired by local destinations, and allowing guests total flexibility in what they choose to eat, and when.

18 SEPARATE COOKING STATIONS EVOLVE THROUGHOUT THE DAY



OPEN FOR BREAKFAST,
LUNCH AND DINNER



FIL ROUGE

A global tasting tour of French-inspired international cuisine.

A common red thread that unites international flavours with a French influence. Fil Rouge is a sophisticated and intimate restaurant, offering a global tasting tour of French-inspired international cuisine, where guests are encouraged to take their time to appreciate both the cuisine and the intimate ambience.

An elegant dessert cart tempts with the freshest creations served tableside, and a superb wine selection showcases the best of both the Old and New World vineyards.

OPEN FOR BREAKFAST
AND DINNER

CHEF'S KITCHEN

An immersive experience offering culinary classes and private dining.

The Chef's Kitchen is an immersive experience held in an ocean-front private kitchen setting for 12 guests. Our team of culinary experts guides our guests through a journey of discovering new ingredients, flavours, textures and cultures, regardless of their cooking skills level.

The experience continuously evolves around the regions visited by the ship, and will also extend ashore with visits to local markets and hand-picked producers. The adjacent private dining room is the perfect venue for guests to celebrate their new skills, savour the incredible dishes they created, paired with superb wines from our sommeliers.

Chef's Kitchen offers a special immersive experience that is not part of the inclusive culinary experiences.

IN-SUITE DINING

Refined dining in the comfort of your suite or private terrace.

Our guests can enjoy an array of cuisines at any time, day or night, in the comfort of their suite or private terrace. Available 24 hours, the menu offers guests a taste of each of our unique dining destinations.



**GUESTS CAN
DISCOVER AND ENJOY
DIVERSE FLAVOURS
FROM AROUND
THE WORLD, INSPIRED
BY THE OCEAN
STATE OF MIND.**



Our team brings **ENTHUSIASM** for *provenance* along with a plethora of stories about the *rare* ingredients, which are **HAND-SELECTED** just for Explora Journeys.

LOUNGING AND ENTERTAINMENT EXPERIENCES

Whether seeking a vibrant buzz or a quiet cocktail, each of the ship's effortless, chic indoor and outdoor bars and lounges emanate European savoir faire.



REIMAGINING ENTERTAINMENT
WITH THE RIGHT VIBE FOR THE RIGHT TIME

An *effortless, cosmopolitan* atmosphere
in which to **DISCOVER**, *enjoy* and
APPRECIATE *diverse* talents from
around the world.

The *perfect* **BLEND** of *vibrancy*
and **PRIVACY** across 12 indoor and
outdoor *bars* and *lounges*.

LOUNGING AND ENTERTAINMENT EXPERIENCES

LOBBY BAR

A centrally-located social bar and lounge

EXPLORA LOUNGE

Luminous lounge offering spectacular 270-degree views of the ocean

MALT WHISKY BAR

A refined tour of the global whisky regions

JOURNEYS LOUNGE

Mixology, enrichment and entertainment continuously evolving throughout the day

ASTERN LOUNGE

All-day lounge for a seaside escape opening up to the Astern Pool

SKY BAR ON 14

A panoramic lounge setting, ideal for soothing cocktails and infinite views

CREMA CAFÉ

Bustling café lounge with sea views

ASTERN POOL & BAR

An all-day pool and lounge setting for a seaside escape on deck 5

ATOLL POOL & BAR

An intimate pool on deck 10 with a chilled vibe throughout the day

HELIOS POOL & BAR

A panoramic adults-only pool and lounge experience

THE CONSERVATORY POOL & BAR

A weather-protected all-day poolside lounge

GELATERIA & CRÊPERIE AT THE CONSERVATORY

Authentic French and Italian indulgences

CASINO – ART GALLERY – CURATED SHOPPING EXPERIENCES

MALT WHISKY BAR

A refined tour of the global whisky regions.

Set within the Explora Lounge, Malt offers a refined tour of the global whisky regions, including some of the rarest whiskies, complete with a walk-in humidor, cigar expert and dedicated outdoor cigar-smoking terrace.

OPEN FROM THE AFTERNOON
TO LATE IN THE EVENING



LOBBY BAR

A centrally-located social bar and lounge.

A central gathering social bar and lounge, amongst high-end boutiques, provides the ideal spot to enjoy refreshments throughout the day and night.



OPEN ALL DAY

CREMA CAFÈ

Bustling European all-day café culture brought to the oceans of the world.

A thick luxurious layer of crema nods to the freshness of an espresso and aptly lends authenticity and sophistication to a café at the centre of life on board.

Inspired by modern European café culture, Crema Café has unpretentiously stylish interiors with comfortable lounge seating, featuring sophisticated reading material and art set against uninterrupted views of the sea. A place designed to meet, discuss, unwind, taste and indulge, where like-minded guests gather to mingle and converse.

OPEN ALL DAY
FROM EARLY MORNING





Explora Lounge is perfect for a quiet moment to **READ, WORK** or sip a **COFFEE**, or simply *admire* the beautiful sea-facing views which instantly *ease the mind* into a **CALMING SPACE**.

EXPLORA LOUNGE

EXPLORA LOUNGE

A luminous lounge offering spectacular 270-degree views of the ocean, a spectacular backdrop to informal drinking and dining.

Explora Lounge is a central meeting place bathed in natural bright light, where guests can watch the world sail by as they enjoy light meals, snacks, and traditional afternoon tea. Perfect for a quiet moment to read, work or sip a coffee, or simply admire the beautiful sea-facing views which instantly ease the mind into a calming space.

Cool and soothing background music during the day is transformed into a jazz and piano bar at night. This is the perfect soundtrack to your journey paired with a sunset aperitivo in hand.

Guests can enjoy light meals, snacks, traditional afternoon tea, along with inventive modern cocktails barista-made coffees, loose leaf teas, smoothies, and fresh pressed juices.

OPEN ALL DAY

JOURNEYS LOUNGE

Mixology, enrichment and entertainment continuously evolving throughout the day.

The most spacious onboard lounge features mixology specialists, enrichment activities and cabaret-style entertainment daily. This venue is designed to continuously evolve and transform throughout the day along with the ocean journey.



OPEN ALL DAY

ASTERN LOUNGE

All-day lounge opening up to the Astern Pool.

Astern Lounge is the social hub of the journey, with a collection of events and rituals suited to every taste.

Effortlessly transitioning throughout the day, Astern Lounge hosts live music, DJ sessions and enrichment insights. Coming to life from sundown, the lounge perfects the aperitivo through a ritual of celebrating the golden hour, complemented by live entertainment.



OPEN ALL DAY

ASTERN POOL & BAR

An all-day pool and outdoor lounge setting for a seaside escape.

An all-day lounge next to the infinity pool on deck 5, ideal for a seaside escape offering chilled beach club vibes, with low background music by day and acoustic musicians and DJs as the sun sets, continuing throughout the evening.

Outdoor dining is available from nearby Sakura restaurant in bento boxes, conveniently served seated at a table, a lounge or a poolside sunbed. Refreshing towels and sun screen are offered to guests throughout the day.



OPEN ALL DAY

GELATERIA & CRÊPERIE AT THE CONSERVATORY

Authentic French and Italian indulgences in a relaxed weather-protected poolside environment.

Set in the relaxed, weather-protected poolside Conservatory, this is the place to treat yourself to authentic French and Italian indulgencies.

OPEN DURING THE DAY

SKY BAR ON 14

A panoramic outdoor lounge setting, ideal for soothing cocktails and infinite views.

Set on the ship's highest point, on deck 14, this panoramic outdoor lounge setting is ideal for soothing cocktails and infinite views.

OPEN ALL DAY



ATOLL POOL & BAR

An intimate pool with a chilled vibe throughout the day.

An intimate pool at the aft of the ship on deck 10, with a chilled ambiance throughout the day. Here, guests can enjoy the sun, sea and serenity along with sunny, sparkling and colourful drinks. Refreshing towels and sun screen are offered to guests throughout the day.

OPEN ALL DAY



OPEN ALL DAY

THE CONSERVATORY POOL & BAR

A weather protected all-day poolside lounge.

The Conservatory is a weather-protected poolside lounge by day. By night, it turns into a cinema experience under the stars. A relaxed, calming venue to unwind and enjoy cocktails, with light, soothing background music playing throughout the day.

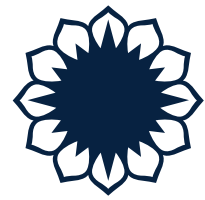


HELIOS POOL & BAR

A panoramic adults-only pool and lounge experience.

Inspired by the Ancient Greek god of the sun, and also literally meaning “sun” in Greek, this adults-only area is indeed the sunniest venue onboard, panoramically facing forward on deck 12. Enjoy lying by the pool or lounging throughout the day as you watch the ship sail through the sea. Refreshing towels and sun-screen are offered to guests throughout the day.

OPEN ALL DAY



OCEAN WELLNESS

Ocean Wellness is a series of experiences
where our guests can embark on personal journeys
of inner discovery and rejuvenation.



OCEAN WELLNESS GIFTS

ENERGY

*A promise of strength and resurgence
as natural as the ocean's incessant vitality.*

SLEEP

*A calm that lays the elemental foundations of life, a renewal
accompanied by the comforting soundtrack of the oceans.*

RELAXATION


*A release from the pressures of life through the discovery
of inner peace bestowed by the soothing power of the ocean.*

MINDFULNESS

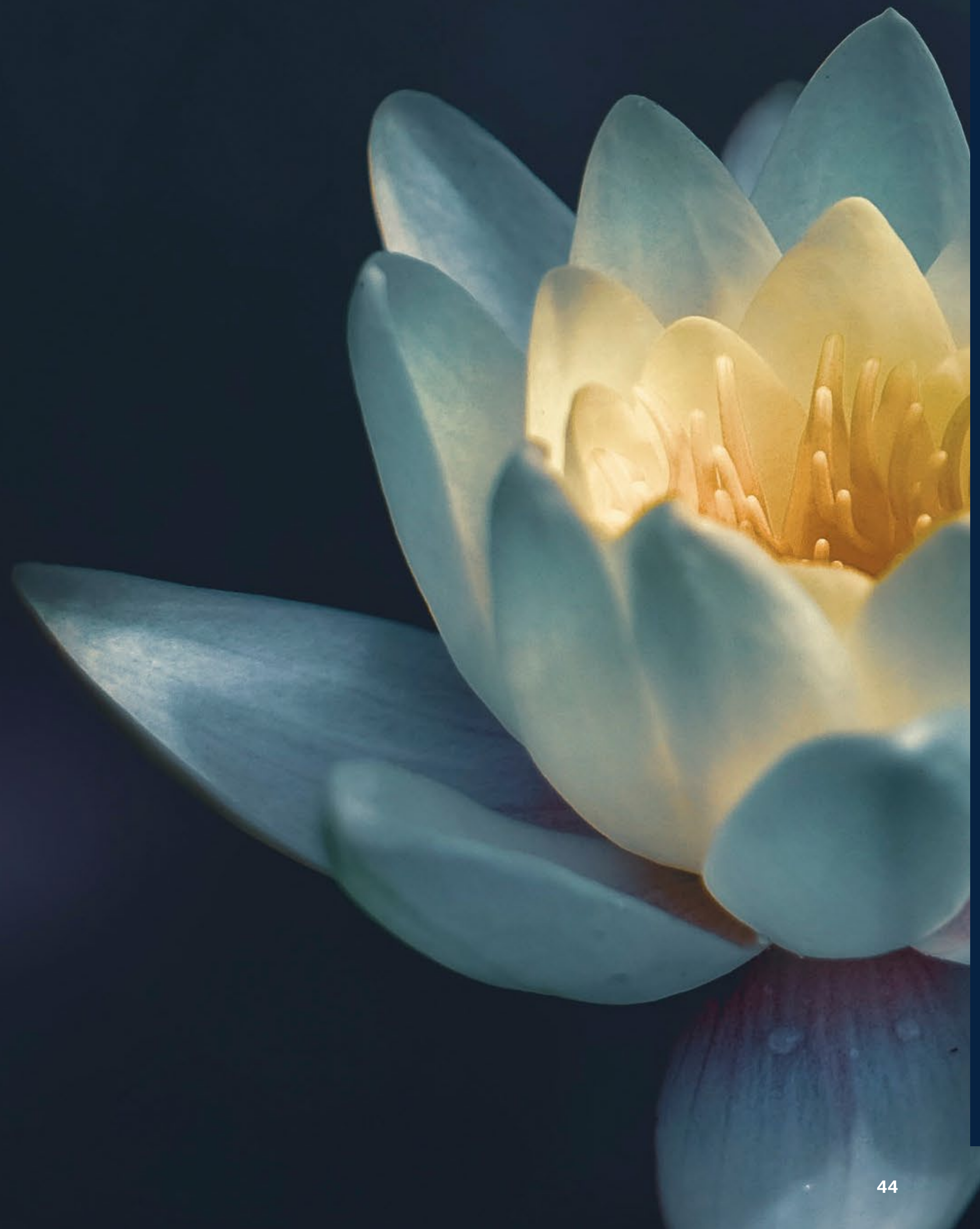
*An internal state of serene self-awareness, induced by
the mystical qualities and vastness of the oceans.*

IMMUNITY

*A preparedness for your future wellbeing, protecting body
and mind, inspired by the natural elements of the ocean.*



OCEAN WELLNESS is inspired by
the *oceans'* **NATURAL FORCES**,
wellness that embraces the
MYSTICAL POWER
of the sea to *invigorate our senses*
and lift our **SPIRITS**.



*Energy, sleep, relaxation,
mindfulness* and immunity **ENHANCE** the
oceans' calming and **REVITALISING** influence,
culminating in each guest achieving *physical*
and *spiritual* **RENEWAL** destined to be
captivated by the *Ocean State of Mind*.



OCEAN WELLNESS – FACILITIES OVERVIEW

OCEAN WELLNESS – THE SPA

713 SQM (7,674 SQ FT)

FACILITIES

- STEAM ROOM
-
- STEAM SHOWER (IN PRIVATE SPA SUITES)
-
- HYDROTHERAPY POOL
-
- FINNISH SAUNA
-
- SALT CAVE
-
- EXPERIENCE SHOWER
-
- ICE FALL
-
- HEATED MARBLE LOUNGERS
-
- RELAXATION ROOM

11 TREATMENT ROOMS

- 2 PRIVATE SPA SUITES WITH
A DEDICATED OUTDOOR RELAXATION AREA
-
- 1 DOUBLE TREATMENT ROOM
-
- 7 SINGLE TREATMENT ROOMS
-
- 1 SINGLE TREATMENT ROOM FOR SPECIALISED
SKIN TREATMENTS – THE MEDI LUXE
TREATMENTS BY DR LEVY SWITZERLAND
-
- OUTDOOR RELAXATION AREA

OCEAN WELLNESS – FITNESS

- FITNESS CENTRE
157 SQM (1,690 SQ FT)
DECK 10
-
- FITNESS STUDIO
70 SQM (753 SQ FT)
DECK 10
-
- OPEN AIR FITNESS
64 SQM (688 SQ FT)
DECK 14
-
- RUNNING TRACK
250 M (820 FT)
DECK 12
-
- SPORTS COURT –
14.2 M X 11 M (46,5 FT X 36 FT)
DECK 14
-
- IN-SUITE FITNESS

OCEAN WELLNESS – BEAUTY

- BEAUTY STUDIO
-
- BARBER CORNER

OCEAN WELLNESS – THE SPA

A calming space designed to reconnect guests to themselves – influenced at every level by the calming presence of the ocean.

We have designed a spa experience to mirror the deeply calming influence of the ocean. The spa is where the pressures of daily life dissipate to insignificance amidst a sensory journey to the Ocean State of Mind.

FEATURES

Spa

–

Wellness area with heated, cold, water and relaxation features

–

Signature ritual

–

Facial treatments

–

Body treatments

–

Specialised Medi Luxe

Treatments by Dr Levy Switzerland

–

Ashore wellness destination experiences

–

In-suite treatments





OCEAN WELLNESS – FITNESS

Spaces that echo the revitalising power of the oceans.

Each of the fitness spaces is designed to motivate guests helping them to lower stress levels, improve sleep quality and enjoy elevated energy.

The *Fitness Centre* and the *Fitness Studio*, a 270 sqm (2,906 sq ft) space filled with the latest high-performance equipment by Technogym and two Pilates Reformers, is where mind and body will benefit from our modern approach to fitness.

Capturing the power of the ocean and transferring it to our guests' workouts, the *Open Air Fitness* offers a unique space where guests can train while enjoying the sea breeze and uninterrupted sea views.

Explora Journeys selected Technogym to offer guests an incredible onboard wellness and fitness experience with personalized fitness solutions, both indoor and outdoor. Guests can train using the very latest Technogym equipment across a range of disciplines in an array of inspiring locations on board, from strength training to yoga, to training in the privacy and luxury of their ocean-front suite.

FEATURES

- | | |
|---------------------------|-----------------------------|
| Functional training | Body assessment |
| – | – |
| Strength training | Immersive experiences |
| – | – |
| Cardio | Outdoor exercise |
| – | – |
| Pilates | Cycling classes |
| – | – |
| Technogym bespoke classes | Personal and group training |

OCEAN WELLNESS – BEAUTY

*We believe inner wellness should radiate
in outer beauty and confidence.*

Our beauty spaces are dedicated to this philosophy, allowing you to feel at one with the natural beauty of your surroundings. The Beauty Studio is a flowing space, to ensure all your beauty needs are catered for in one space, ranging from hair rituals, barber treatments to rejuvenating hand and foot treatments.

FEATURES

Hair care

–

Barber corner

–

Manicure and hand treatments

–

Pedicure and foot care

–

In-suite beauty services





OCEAN WELLNESS – WELLBEING

Our selection of wellbeing initiatives have been carefully curated to ensure that our guests enrich their sense of wellbeing throughout and beyond their journey.

Experiences, programmes and spaces to enhance the influence of the ocean on wellbeing, helping guests achieve a state of inner and outer calm and centeredness. From sleep to nutrition, our selection of wellbeing initiatives have been carefully curated to ensure that our guests achieve their Ocean State of Mind.

FEATURES

- Mindfulness practices
-
- Sleep retreat
-
- Immune boosting retreat
-
- Yoga
-
- Stress management and relaxation
-
- Mindful Nutrition
-
- In-suite immersive experiences

OCEAN STATE OF MIND

With numerous indoor and outdoor pools and whirlpools across the ship's decks, the ship has been designed with water as a real focal point of the experience – helping our guests discover their Ocean State of Mind.



An **OUTDOOR** experience *inspired*
by the **OCEAN STATE OF MIND.**



THE CONSERVATORY POOL

LEISURE EXPERIENCE

Generous outdoor decks – offering more than 2,500 sqm (26,909 sq ft) of **SPECTACULAR *sea* VIEWS** – combined with numerous *indoor and outdoor* whirlpools on the ship's promenade deck for an **EXPERIENCE** inspired by *seas and oceans*.

**THREE HEATED OUTDOOR POOLS,
INCLUDING ONE ADULTS-ONLY**

–
64 PRIVATE CABANAS

–
**ONE HEATED INDOOR POOL WITH RETRACTABLE
GLASS ROOF, LARGEST AND ONLY IN
CATEGORY AT 1,200 SQM (12,917 SQ FT)**

–
**ONE INDOOR HYDROTHERAPY POOL AT
OCEAN WELLNESS – THE SPA**

–
**FIVE INDOOR AND
OUTDOOR WHIRLPOOLS**

–
**SEVERAL POOLSIDE AND
OUTDOOR BARS AND LOUNGES**

CURATED SHOPPING EXPERIENCES

Discover the bespoke shopping experiences
inspired by the Ocean State of Mind
and influenced by the destinations we visit.





THE JOURNEY

More than just a place to buy – it is a **JOURNEY OF DISCOVERY**, *consciousness*, and *craftsmanship with provenance*; a unique collection of over 30 *finest artisanal brands* that share a commitment to caring for **PEOPLE** and the **PLANET**.

OUR COLLECTIONS

We partner with brands who reflect our own commitment to sustainable practices and environmental consciousness. Every item in our selection is a celebration of creativity, passion, and the power of discovery, each with its own magical story to tell.



SENSORIAL FRAGRANCES & SKINCARE

Carefully selected to showcase the rarest and most precious natural ingredients, for a unique and unforgettable sensory experience.



EFFORTLESS READY TO WEAR

Unparalleled comfort and style, a collection designed to gift the wearer effortless confidence and ease.



HOMEWARE & GIFTS

Inspire a sanctuary of style and comfort, designed to bring beauty and functionality to every room.



THE FINEST FOOD AND DRINKS

Savour the essence of your travels through the finest food and beverages, carefully selected to showcase small producers, unforgettable flavours and unique stories.



TIMELESS ACCESSORIES

Elevate your style with timeless accessories, crafted to perfection and designed to last a lifetime.

Step into a world of opulence as you explore dedicated spaces for Rolex, Cartier, Panerai and Piaget on board EXPLORA I.

ROLEX

The bespoke shopping experience on board EXPLORA I features the first-ever Rolex boutique on board a ship. While sailing the world's most coveted destinations, our guests will have the opportunity to purchase some of the iconic timepieces by Rolex at a boutique entirely dedicated to the Swiss luxury watchmaker.



PANERAI

Italianity, Marine World, Swiss Technicity and Modern Heroes: the four pillars that have long defined Panerai are translated into its first floating boutique, an immersive environment dedicated to the discovery of the Maison's legendary DNA.



PIAGET

Piaget epitomizes daring creativity – a quality that has continued to permeate through the Maison since its beginnings in 1874. Mechanical masterpieces defined by pure lines and timeless elegance, Piaget's luxury watches figure among the most prestigious ambassadors of the watchmaking world.



CARTIER

A reference in the world of luxury, Cartier, whose name is synonymous with open-mindedness and curiosity, stands out with its creations and finds beauty wherever it may lie. Cartier's creations symbolize the convergence between exceptional craftsmanship and a timeless signature.



MULTI- GENERATION-FRIENDLY JOURNEYS

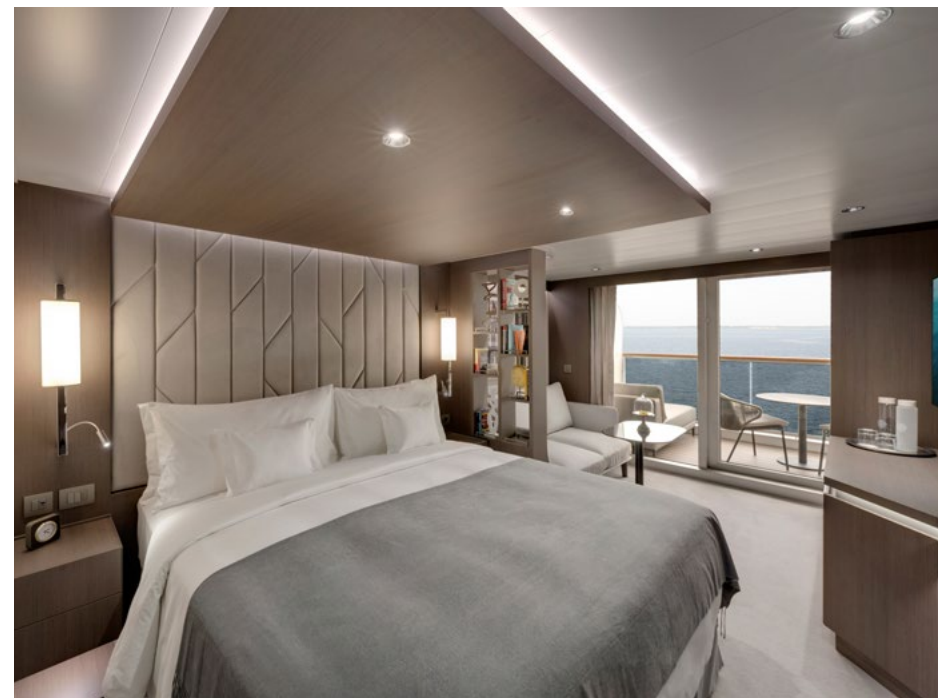
Our promise of a 'Home at Sea' is, of course, extended to your entire family. We welcome all generations and believe few things are as satisfying and enjoyable as special moments spent on vacation when you can all be together.



CONNECTING SUITES

78 multi-generation-friendly connecting suites

Ensuring that families and larger groups can enjoy plenty of space and privacy, EXPLORA I and EXPLORA II offer 78 multi-generation-friendly connected suites across the categories of Ocean Suites, Ocean Penthouses and Ocean Residences.



Diverse suite combinations are available to accommodate families and groups of various sizes and make the journey even more comfortable and effortless for everyone.

CURATED FAMILY-FRIENDLY DESTINATION EXPERIENCES

A series of Destination Experiences have been curated to be enjoyed by the whole family, ensuring that you create the most unforgettable moments together.

The exciting experiences feature easily accessible and fun edu-tainment activities such as a day at a farm or a visit to a space centre where children will get to meet and hear stories from a real astronaut. Those passionate about marine life can opt for a whale-watching adventure, where, accompanied by a marine biologist, your family can observe the whales and other fascinating marine life.



ADULTS-ONLY SPACES

For a moment of stillness and serenity, guests can enjoy the Helios Pool & Bar on deck 12, a panoramic area at the forward part of the ship exclusively reserved for adults only. Most of the other public spaces, restaurants, bars, lounges and pools on EXPLORA I and EXPLORA II welcome families and children.

At any time of the day, the culinary team will be delighted to offer a variety of choices to accommodate the wishes of our little guests.



NAUTILUS CLUB

A space dedicated to our younger guests

Nautilus Club is a space dedicated to our younger guests, where a team of expert hosts will make sure they will be entertained and enriched in the company of other guests their own age.



Nautilus Club offers the latest generation of video games and VR consoles, such as PlayStation 5 and PlayStation VR2, Xbox, Nintendo Switch, iPads and Oculus Pro. The space also offers other activities such as sports sessions, technology tournaments, paint art, and craft play, along with games in locations throughout the ship. Alternatively, young guests can simply chill out with new friends.

NAUTILUS CLUB AND MSC FOUNDATION

In partnership with the MSC Foundation, our younger guests can participate in an activity programme dedicated to a sustainable future, caring for the sea and planet. Projects include workshops and discussions on marine conservation, environmental footprint, our ships' sustainable practices, the impact of tourism, and community support. These and many other activities are designed to inform and engage the lively younger minds of our guests.



THOUGHTFUL DETAILS AND AMENITIES FOR CHILDREN

Your hosts will arrange everything to make you and your family feel comfortable and at home. To aid this, our younger travellers are provided with thoughtful touches such as children's bathrobes, slippers and hangers. Upon request, our hosts can provide amenities for babies, such as baby cribs with linens, blankets and baby pillows.



OUR DESTINATION EXPERIENCES

*Providing the perfect blend of celebrated
destinations and less-travelled spots
for our curious, discerning travellers*

Explora Journeys is creating a collection of journeys that offer the perfect blend of **CELEBRATED destinations** and lesser-travelled spots, both seen from a **NEW** and **ORIGINAL point of view** that will inspire and excite our curious, discerning travellers.

These are **ENRICHING holidays** for the curious, cosmopolitan traveller who wants to *create* **CONNECTIONS** that last *long* **BEYOND** the Journey itself.

OUR DESTINATIONS IN 2023, 2024 & 2025

Mediterranean, Northern Europe, Iceland and Greenland, USA and Canada, Caribbean, Pacific Coast and Hawaii.

View our journeys collection
by scanning the below QR code



DESTINATION EXPERIENCES

Explora Journeys offers an array of curated pursuits and memorable experiences that perfectly complement our ocean journeys. Here is just a taster of what our guests can look forward to.

BEYOND BOUNDARIES

Soul-stirring experiences that touch the impossible, from the thrill of supersonic speed to the deepest fathoms of ocean trenches.

TAILORED EXPERIENCES

The travel equivalent of haute couture, our Tailored Experiences are tailor-made for those who seek truly customised arrangements that are both personal and without compromise.

ENCHANTING EXPLORATIONS

Meticulously designed to usher in next-level exclusivity for small, agile groups seeking peerless experiences, and to witness moments that are off limits to most.

DESTINATION ESSENTIALS

Our Destination Essentials offer must-do experiences in unbridled finesse, hidden wonders and little surprises.

IN-COUNTRY IMMERSIONS

Traversing beyond the bounds of the ocean, we take you deeper into the culture of the countries we visit with immersive all-inclusive excursions.





There is something within all of us that *seeks to touch* the **IMPOSSIBLE**; to **REACH** out and fulfil a *transcendent* need that *resonates* deep within our *being*.

BEYOND BOUNDARIES

Soul-stirring experiences that touch the impossible, from the thrill of supersonic speed to the deepest fathoms of ocean trenches.

Our Beyond Boundaries experiences answer that call where opportunities into the uncharted promise profound and personal enrichment.

Whether you seek the thrill of supersonic speed, the silence of polar mountain peaks, the deepest fathoms of ocean trenches, the sense of awe from meeting world-leading intellects and artisans.

These experiences are more than one-off wonderments

They are soul-stirring achievements that will forever influence your perspective of the world and your role within it.

The only remaining question is how far do you dare to go to close the distance between your dreams and reality?

YOUR EXPERIENCES WILL FEATURE:

ONCE-IN-A-LIFETIME EXPERIENCES

—

DESIGNED FOR INDIVIDUALS OR INTIMATE GROUP

—

AUTHENTIC, DIFFICULT TO DUPLICATE ADVENTURES

—

EXTREME OR REMOTE ENCOUNTERS

—

INSIGHT INTO OUR PLANET AND ITS MARVELS

—

TURNING DREAMS INTO REALITY


TAILORED EXPERIENCES

The travel equivalent of haute couture, our Tailored Experiences are tailor-made for those who seek truly customised arrangements that are both personal and without compromise.

We are pleased to curate your requests for singular, customised arrangements that can be as off-the-beaten-path or utterly indulgent as you wish.

Whether yours is an intimate group of two or a larger gathering of family and friends, we can help you adapt a featured destination experience or totally tailor an arrangement that delivers exactly where and what you prefer.

We also extend our private car and driver programme for guests wishing to design their own itinerary.



This programme *provides* the utmost in **PRIVACY** and *flexibility* with an appropriately sized *luxury* vehicle to **ACCOMMODATE** your group for either half or full-day schedules.



THINK of our *Enchanting EXPLORATIONS* like travelling through the pages of a *little black book of secrets* that belongs to the **FASHIONABLE** and **ELITE**.

ENCHANTING EXPLORATIONS

Meticulously designed to usher in next-level exclusivity for small, agile groups seeking peerless experiences, and to witness moments that are off limits to most.

The Enchanting Explorations are the definition of distinction for bespoke groups seeking peerless experiences.

YOUR EXPERIENCES WILL FEATURE:

SMALL, INTIMATE GROUPS

—

TAILORED, BOUTIQUE ADVENTURES

—

BEHIND-THE-SCENES EXPERIENCES

—

EXPERT LOCAL EXPLORERS FOR ENRICHING DISCOVERY

—

DEEPER INSIGHTS INTO CULTURES AND TRADITIONS

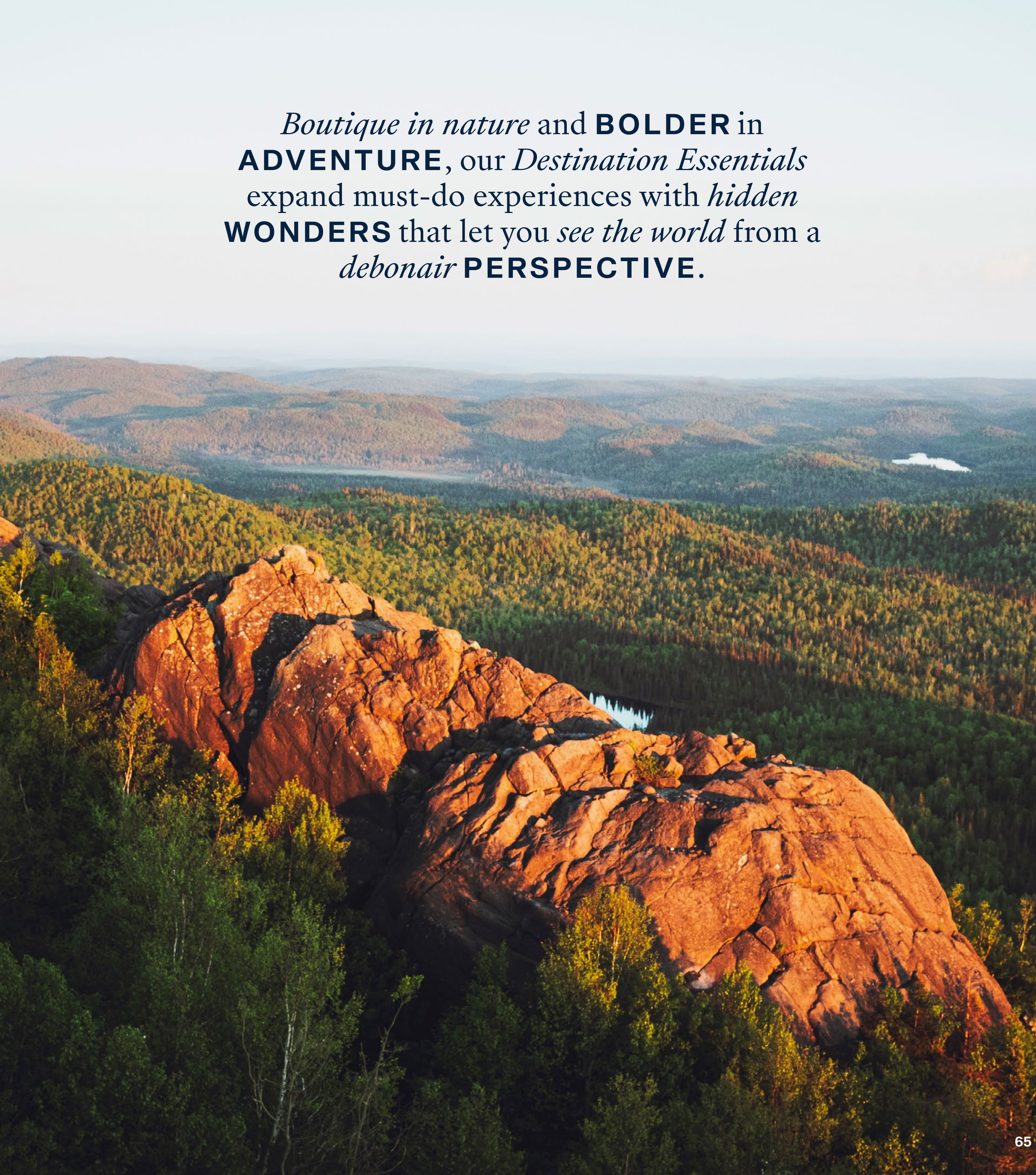
—

EXCLUSIVE CULINARY EXPERIENCES

—

VIP ACCESS TO LANDMARK SITES AND SPECIAL EVENTS

Boutique in nature and **BOLDER** in **ADVENTURE**, our *Destination Essentials* expand must-do experiences with *hidden WONDERS* that let you *see the world* from a *debonair PERSPECTIVE*.



DESTINATION ESSENTIALS

Our Destination Essentials offer must-do experiences in unbridled finesse, hidden wonders and little surprises.

It's not enough to just go to Cairo's Great Pyramids or the Empire State Building; intimately feel the power of their presence, find yourself tingling with goosebumps and experience it in a way that quenches your thirst to do more than anyone else can experience.

YOUR EXPERIENCES WILL FEATURE:

MUST-DO EXPERIENCES

—

DISCOVERING LOCAL HIGHLIGHTS THROUGH
A DIFFERENT LENS

—

EXPERT GUIDES AND HOSTS TO ENHANCE
YOUR DISCOVERY

—

CULINARY TASTINGS THROUGH LOCAL
FLAVOURS AND TRADITIONS

—

FULL IMMERSIONS INTO CULTURES
AND CUSTOMS

—

CLOSE-UP ENCOUNTERS WITH THE
NATURAL WORLD

IN-COUNTRY IMMERSIONS

Traversing beyond the bounds of the ocean, we take you deeper into the culture of the countries we visit with immersive all-inclusive experiences.

Designed as single- or multi-day overland experiences, our In-Country Immersions are all-inclusive and available to intimately sized groups starting before, during or after your journey.

All you have to do is let go and let us immerse you in the extraordinary that lies further afield.

YOUR EXPERIENCES WILL FEATURE:

LUXURY TRANSPORTATION SUCH AS PRIVATE JET,
HELICOPTERS, VEHICLES, BOATS OR OTHERC

—

ACCOMMODATIONS IN 5-STAR OR BOUTIQUE HOTELS

—

CULINARY EXPERIENCES, INCLUDING ALL MEALS,
BEVERAGES, AND SELECTED SPIRITS

—

VIP ACCESS TO LANDMARK SITES AND SPECIAL EVENTS

—


ULTRA-EXCLUSIVE EVENING EXPERIENCES

—

METICULOUSLY VETTED HOSTS
TO COORDINATE ALL LOGISTICS

—

LUXURY TRANSFERS AND LUGGAGE HANDLING



Our In-Country **IMMERSIONS**
whisk you **SUNWARD** via *private*
jets or *hot-air balloons*, nimble ATVs
or sure-footed horses to *chase* nearby
MARVELS, events and **WILDERNESS**
treks both *famously celebrated*
or *deeply shrouded* in **MYSTERY**.



PRE- & POST-JOURNEY HOTELS, FLIGHTS & TRANSFERS

Let our Explora Experience Ambassadors ease you into your travel experience by taking care of essential arrangements before and after your journey.

LUXURY HOTEL STAYS

Our comprehensive hotel programme is the perfect option to enrich your explorations. Through our extensive partnerships with leading hoteliers around the globe, we can arrange bespoke accommodations in and around our port destination cities for any duration, room category or cultural experience.

TRUSTED TRANSFERS

Our worry-free transfers can add that extra step of ease to your journey. Group and private transfers can be arranged between the airport and pier or between the pier and the hotel on days of either embarkation or disembarkation.

AIR TRAVEL

Allow us to schedule and reserve your flights to ensure an effortless coordination of your travels. Excellent relationships with global airlines, means we can ensure the best possible fares, schedules and choice of class to tie in with your journey.

PRIVATE AIR CHARTERS

Privacy, flexibility and simplicity are the key reasons to choose our private flight arrangements. Our Explora Experience Ambassadors can help you choose from a significant range of aircraft solutions to fit the personalised travel needs for couples, a mid-sized family, or a larger group of friends and family. We complete our service with home-to-ship transfers and seamless luggage handling for the utmost in safe and convenient travel.

SEAMLESS LUGGAGE HANDLING

For the ultimate ease of travel, our luggage valet programme allows you to ship your travel cases directly from your front door and have them waiting for you at your suite onboard the ship and vice versa.

Please contact us for more information.



START YOUR JOURNEY

For an *easy* and *efficient* booking experience

PLEASE CONTACT
YOUR PREFERRED
TRAVEL ADVISOR

VISIT
EXPLORAJOURNEYS.COM

CONTACT THE EXPLORA
EXPERIENCE CENTRE
via email at:
contact@explorajourneys.com
or phone from the list below:

AMERICAS

UNITED STATES

MEXICO

PUERTO RICO

1 833 925 1567

+1 216 672 6653

—

ARGENTINA

BRAZIL

PERU

++ 800 08250865

+1 216 672 6653

—

CANADA

1 833 925 1567

+1 216 672 6653

—

CHILE

+ 56 800 914 946

+1 216 672 6653

—

COLOMBIA

URUGUAY

++ 800 08250865

+1 216 672 6653

—

VENEZUELA

+1 216 672 6653

EUROPE

EUROPEAN UNION –

EXCEPT ITALY

++ 800 08250863

+ 41 43 5086478

—

ITALY

800 973 726

+41 43 5086478

—

SWITZERLAND

+ 41 43 5086478

—

UNITED KINGDOM

0 800 031 8935

+ 41 43 5086478

—

ISRAEL

00 800 08250863

+ 41 43 5086478

—

OTHER COUNTRIES

+ 41 43 5086478

—

ASIA PACIFIC

AUSTRALIA

1 800 595 257

—

CHINA

JAPAN

MALAYSIA

NEW ZEALAND

PHILIPPINES

SINGAPORE

THAILAND

+ 800 08250851

—

INDIA

OTHER COUNTRIES

+ 41 43 5086478

*Telephone numbers are subject to change. Local and national telephone rates apply.
Toll-free phone number is for landlines. You may be charged when calling from a mobile phone.*







Explora

JOURNEYS